

Descriptive Features:

	Standard	Option
Signaller Type	Intrusive	None
Indication	Visual (57 Series)	Visual/Electrical (53 Series) Electrical (55 Series)
Indicator Reset	Manual (53 & 57 Series)	Automatic (55 Series)
Connection	2" NPT Adapter	RF Flange RTJ Flange
Service	Above Ground	Underground - Extended Series
NACE	Meets MR-0175/ISO15156 Material Requirement	None

Material:

	Standard	Option
Connection NPT Adapter	316	• Duplex • Inconel • Hastelloy
Connection Flange	A350 LF2	• A105 • 316L • Duplex • Inconel
Connection Overlay	Composite Fluoropolymer	As Required
Lower Housing	316	• Duplex • Inconel • Hastelloy
Upper Housing	AL 6061-T6, Polyester TGIC Coating	As Required
Internal	316	• Duplex • Inconel • Hastelloy
Fasteners	18-8	None
Seals	Viton™ (FKM)	• Viton™ (FKM) ED • EPDM • HNBR

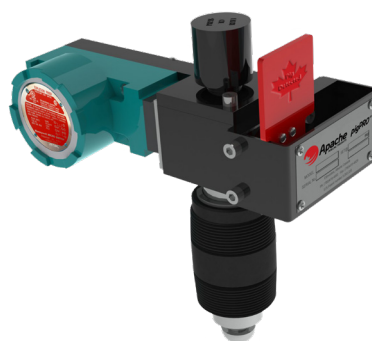
Viton™ is a registered trademark of DuPont Performance Elastomers LLC

Electrical Switch:

	Standard	Option
Product Type	Microswitch, Hazardous Area, Limit Switch - LSX	BX4L
Temperature Rating	-40°C to 93°C	None
Housing Material	Die-Cast Aluminum	316L
Termination Type	3/4" 14NPT Conduit	1/2" 14NPT Conduit
Sealing	NEMA 1, 3, 4, 6, 7 (Class 1, Division 1, Groups B, C, D), 9 (Class 2, Division 1, Groups E, F, G), 13	ATEX

NEMA To IEC Enclosure Designations*:

NEMA Enclosure Type Number	IEC Enclosure Designation
1	IP10
2	IP11
3	IP54
3R	IP14
3S	IP54
4 and 4X	IP56
5	IP52
6 and 6P1	IP67
12 and 12K	IP52
13	IP54



* NEMA Standard No. 250 Appendix A guideline to comparing NEMA enclosure types to IEC designations